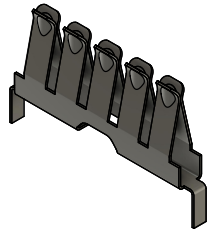
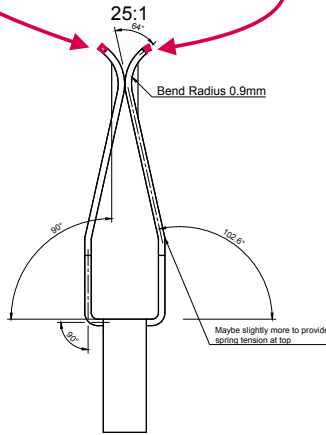


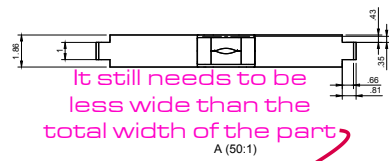
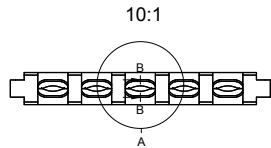
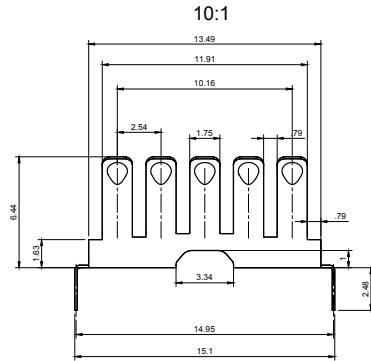
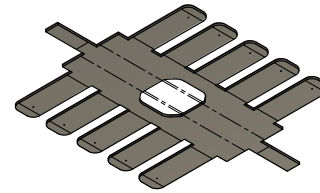
### Folded



Straight or continued curve doesn't matter



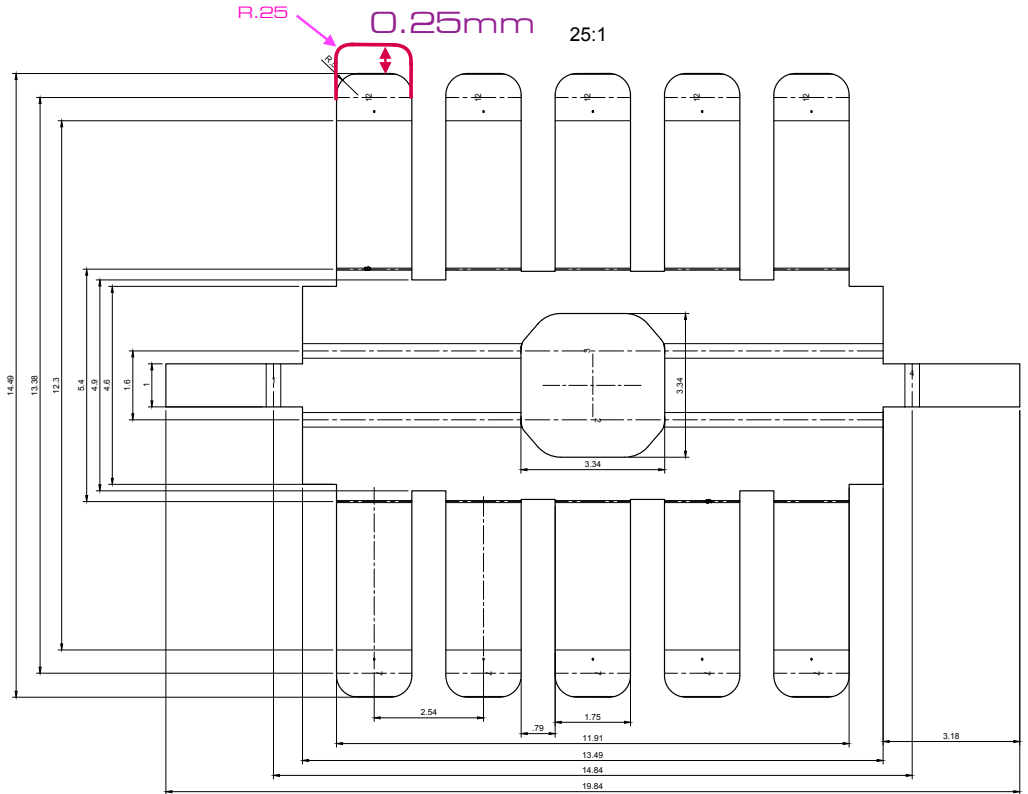
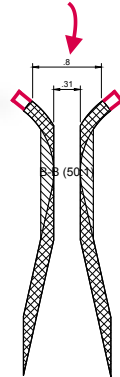
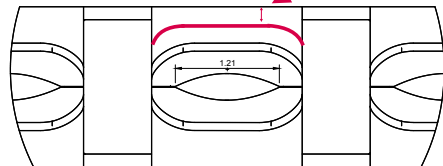
### Flat Pattern



It still needs to be less wide than the total width of the part

I would like this dimension to be slightly larger

~1.2mm



ID	Direction	Angle	Radius
14	Up	64	.9
7	Up	64	.9
6	Down	12.6	.15
5	Down	12.6	.15
4	Up	90	.15
3	Down	90	.15
2	Down	90	.15
1	Up	90	.15

Bend Table

Tolerances	
Angle	± .1°
Dimensions	± 0.05mm
Material	± 0.05mm
Thickness	

Material	
Phosphor Bronze CR Steel	Please quote both
Spring Temper	
Plating not necessary	Let me know if it's suggested
0.15 mm Thickness	
Surface Finish not important	As long as it's electrically conductive and solderable

#### Other Notes

The place where the metal fingers meet at the top should have a little bit of tension toward each other. They're electrical contacts for a breadboard, so wire in the range of 0.3mm-1mm should be able to slide in smoothly and make good electrical contact consistently.

Bend 11 should be increased to provide more tension if the contacts at the top don't squeeze together.

Author	Revision	Kevin Caposio	5/13/23	Created By
Drawn	Checked			Checked Date
bbSimple				
Part	Rev	Rev	Rev	Rev
				1/1